



# App User Guide

## Robustlink

**Version: 1.0.2**

**Date: December 25, 2021**

Copyright© Guangzhou Robustel Co., Ltd.

All Rights Reserved.

## Contents

Revision History.....	3
<b>Chapter 1 Overview.....</b>	<b>4</b>
<b>Chapter 2 App Installation.....</b>	<b>4</b>
<b>2.1 Installation.....</b>	<b>4</b>
<b>2.2 Uninstallation.....</b>	<b>6</b>
<b>Chapter 3 Parameters Description.....</b>	<b>6</b>

## Revision History

Updates between document versions are cumulative. Therefore, the latest document version contains all updates made to previous versions.

Release Date	App Version	Doc Version	Details
June 06, 2016	2.0.0	v.1.0.0	First Release
June 29, 2018	2.0.0	v.1.0.1	Revised the company name
December 25, 2021	2.0.0	v.1.0.2	Revised the company name Deleted the document status: confidential

## Chapter 1 Overview

Robustlink is a M2M management platform, which is developed independently by the Robustel Company. router can be managed by Robustlink. User can set the relative parameters in this section. This function is as an App which needs to install into router in **System->App Center** unit.

## Chapter 2 App Installation

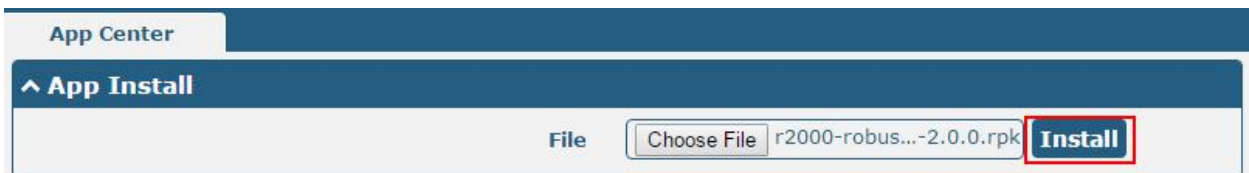
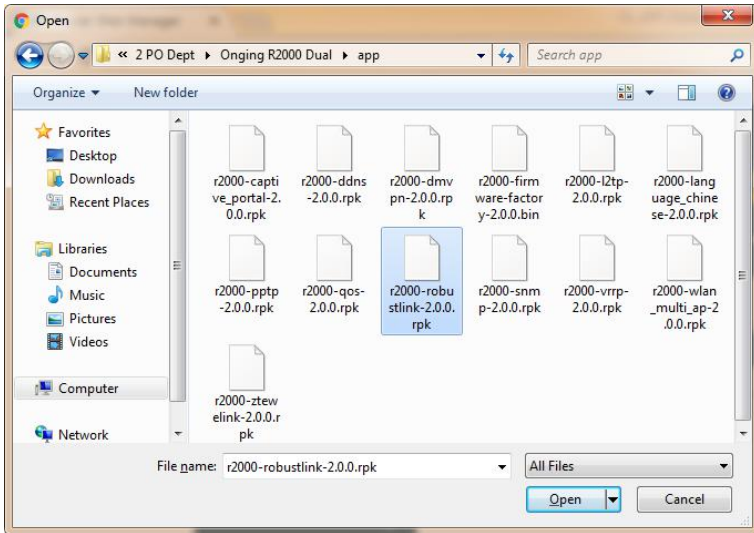
### 2.1 Installation

Path: **System->App Center**

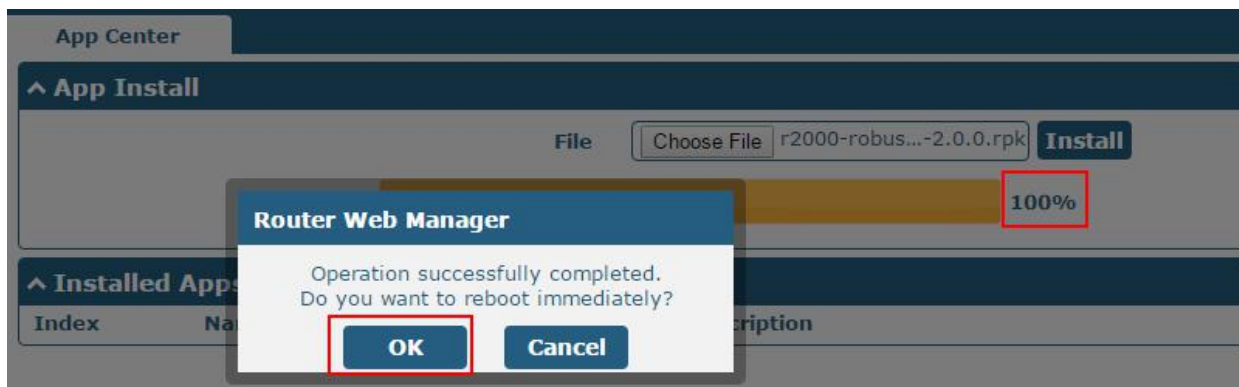
- 1 Please place Robustlink App .rpk file (e.g. r2000-robustlink-2.0.0.rpk) into a free disk of PC. And then log in router configuration page; go to **System->App** as the following screenshot show.



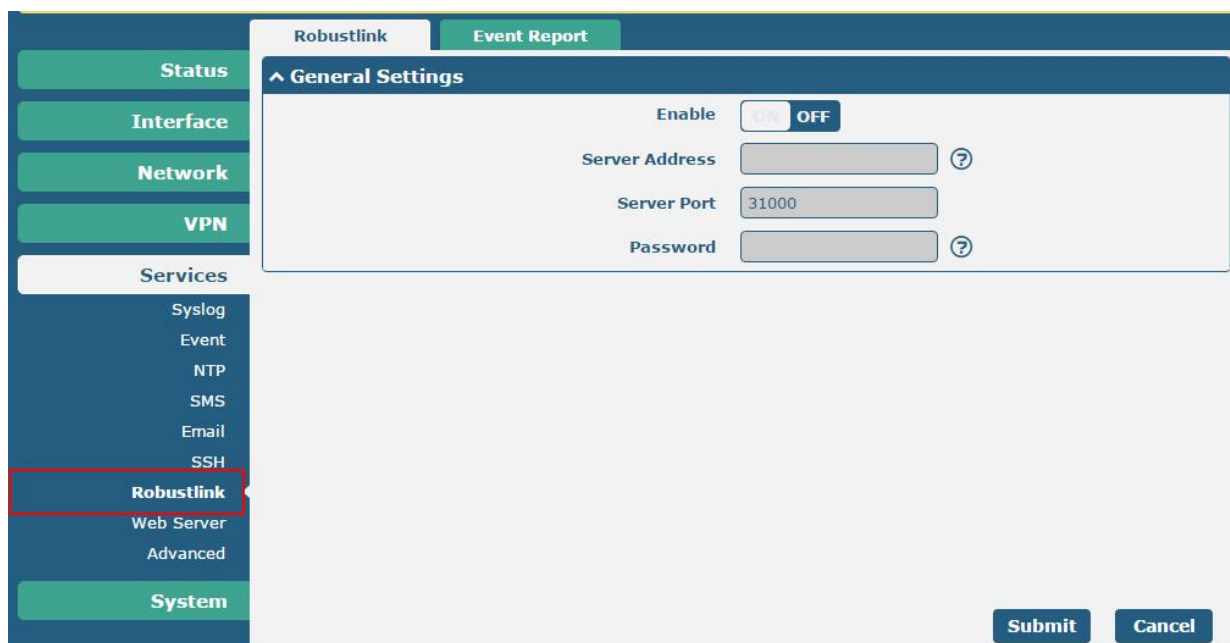
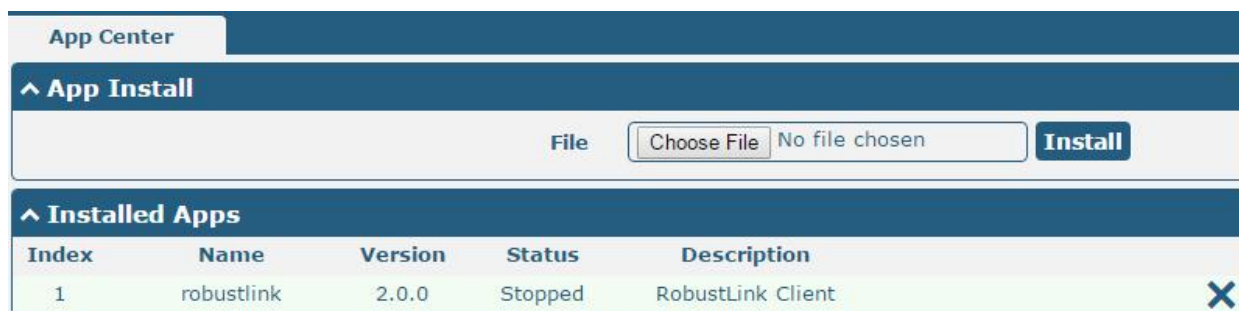
- 2 Click "Choose File" button, select Robustlink App .rpk file from the PC, then click "Install" button of router configuration page.



- When the rate of installation progress reach 100%, the system will pop up a router reboot reminder window. Please click “OK” to make router reboot.



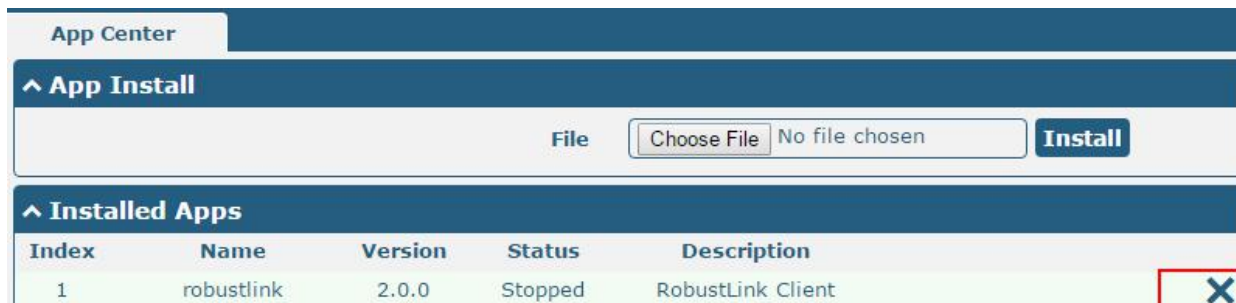
- After router power on again, log in configuration page, Robustlink will be include in App Center’s “Installed Apps” list, and the function configuration will display in **Services** part.



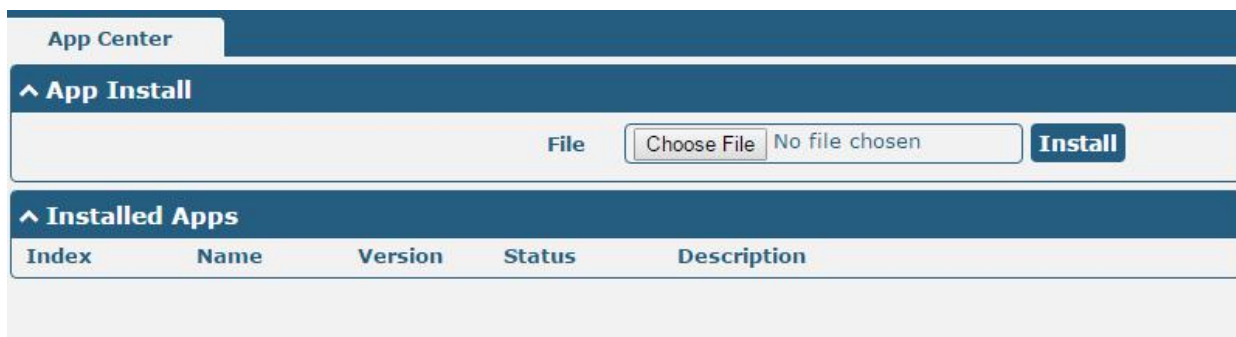
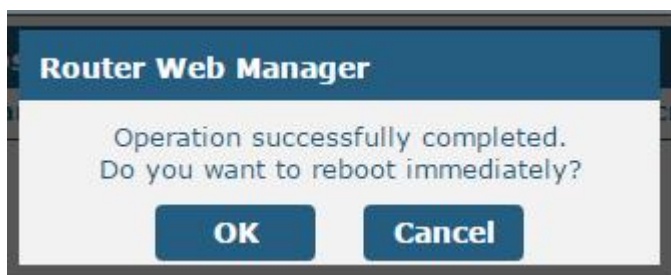
## 2.2 Uninstallation

Path: System->App Center

- 1 Go to “Installed Apps”, find Robustlink App and then click “X”.



- 2 Click “OK” in the router reboot reminder popup window. When router finish restart, Robustlink had been uninstalled.



## Chapter 3 Parameters Description



Robustlink		
Item	Description	Default
Enable	Switch to ON to enable the Robustlink.	OFF
Server address	Enter IP address or domain name of Robustlink.	Null
Port	Enter port number of Robustlink.	31000
Password	Enter the password preset in Robustlink. Valid characters: a-z, A-Z, 0-9, @, ., -, #, \$, *. <i>Note: The passwords set in router and Robustlink need to be the same.</i>	Null

router support report event to Robustlink platform. In this section, user can select the events those will be reported to Robustlink.



Event Report	
Item	Description
Events	Switch button show “ON” that enable the event. And when the enable event happen, router will report this event to Robustlink platform automatically.

**Guangzhou Robustel Co., Ltd.**

Add: 501, Building 2, No. 63, Yong'an Avenue,  
Huangpu District, Guangzhou, China 510660

Tel: 86-20-82321505

Email: [support@robustel.com](mailto:support@robustel.com)

Web: [www.robustel.com](http://www.robustel.com)